

The

GW EXTREMISM TRACKER

new research & analysis from the Program on Extremism

THE GEORGE WASHINGTON UNIVERSITY

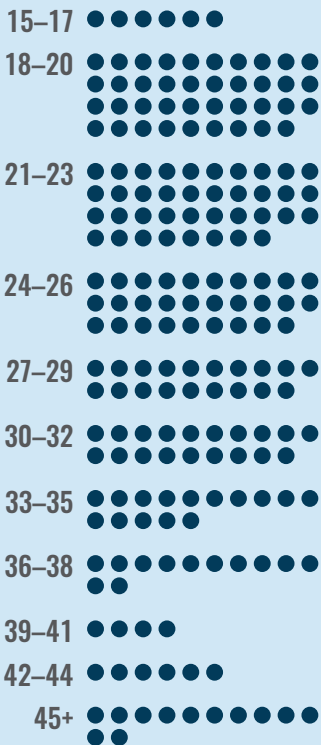
ISLAMIC STATE IN AMERICA

204 individuals have been charged in the U.S. with offenses related to the Islamic State (also known as IS, ISIS, and ISIL)—since the first arrests in March 2014. (As of February 3, 2020)

AGE

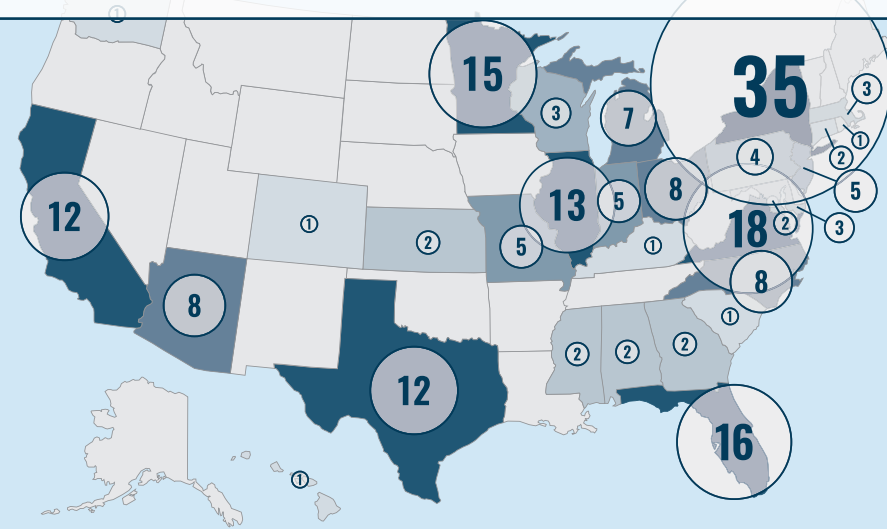
28 average age at charging

● = 1 person



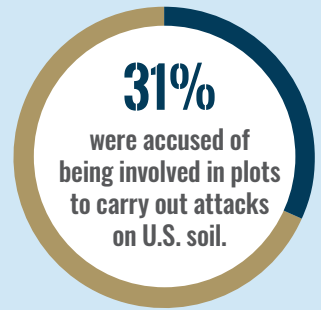
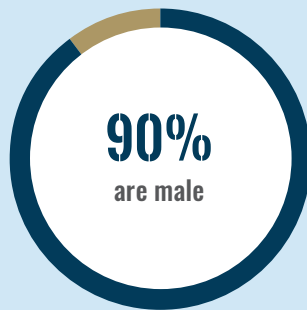
13.6 YEARS average sentence*

The FBI has stated that there are active IS-related investigations in all 50 states. To date, 29 states and the District of Columbia have had at least one charge within their borders:

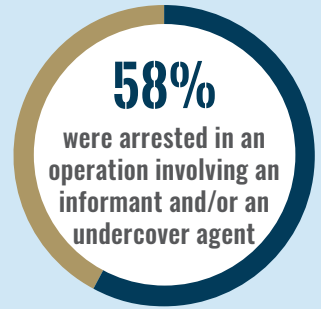
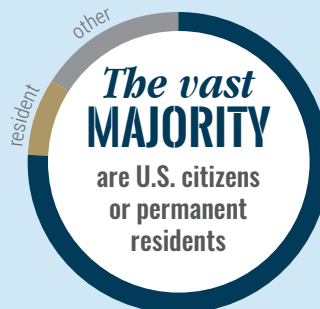


NUMBERS BY STATE

DEMOGRAPHICS & CHARGES



14.9 individuals have pleaded or were found guilty.



Read the full report:

ISIS IN AMERICA
FROM RETWEETS TO RAQQA



* Uses 470 months for life sentences per the U.S. Sentencing Commission practice.

Find more at extremism.gwu.edu or follow @gwupoe on Twitter