

The

GW EXTREMISM TRACKER

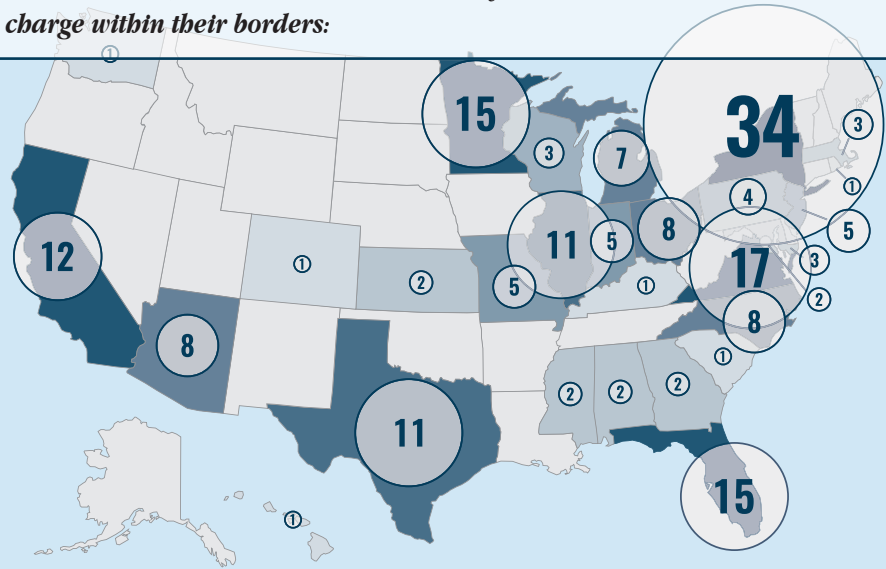
new research & analysis from the Program on Extremism

THE GEORGE WASHINGTON UNIVERSITY

# ISLAMIC STATE IN AMERICA

**196** individuals have been charged in the U.S. with offenses related to the Islamic State (also known as IS, ISIS, and ISIL)—since the first arrests in March 2014. (As of October 3, 2019)

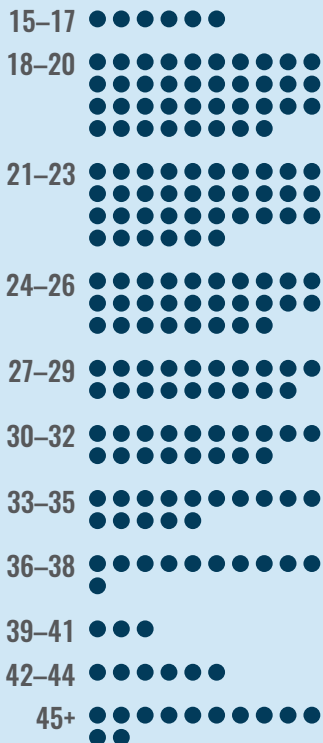
The FBI has stated that there are active IS-related investigations in all 50 states. To date, 28 states and the District of Columbia have had at least one charge within their borders:



## AGE

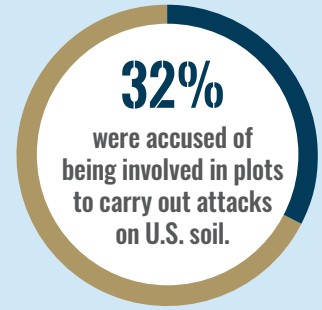
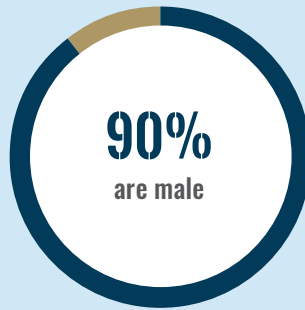
**28** average age at charging

● = 1 person

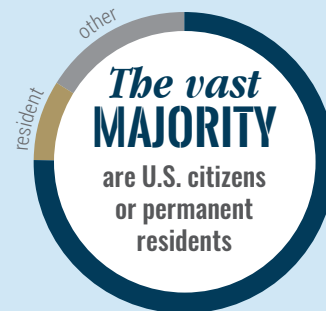


## DEMOGRAPHICS & CHARGES

## NUMBERS BY STATE



**14.6** individuals have pleaded or were found guilty.



**13.5 YEARS** average sentence\*

Read the full report:

**ISIS IN AMERICA**  
FROM RETWEETS TO RAQQA



\* Uses 470 months for life sentences per the U.S. Sentencing Commission practice.

Find more at [extremism.gwu.edu](http://extremism.gwu.edu) or follow @gwupoe on Twitter