

The

GW EXTREMISM TRACKER

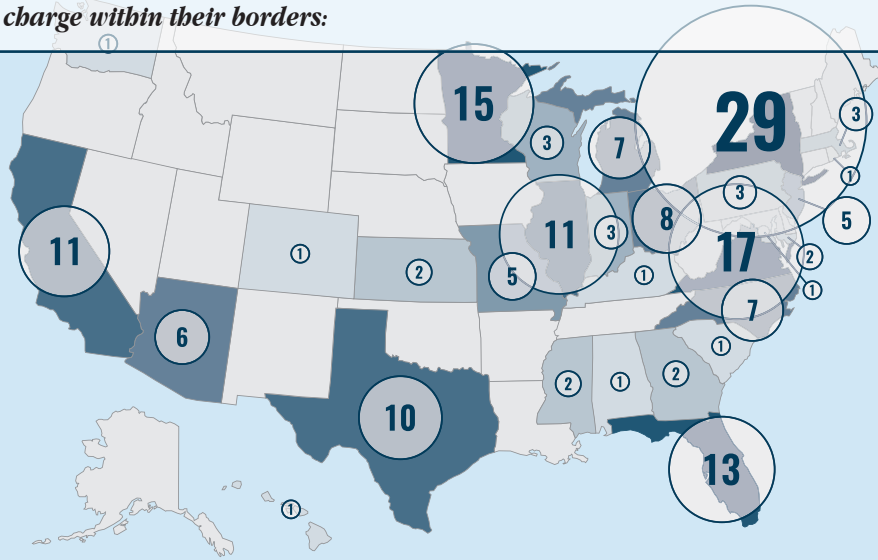
new research & analysis from the Program on Extremism

THE GEORGE WASHINGTON UNIVERSITY

ISLAMIC STATE IN AMERICA

178 individuals have been charged in the U.S. with offenses related to the Islamic State (also known as IS, ISIS, and ISIL)—since the first arrests in March 2014. (As of April 4, 2019)

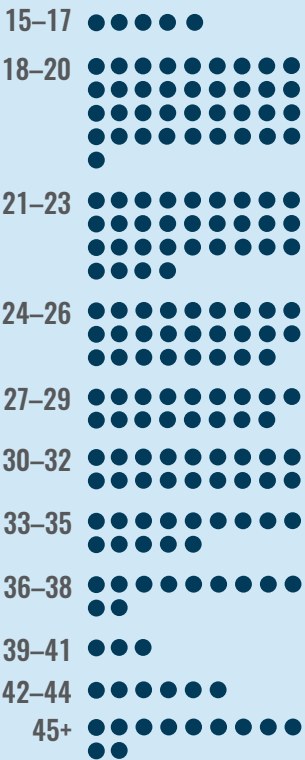
The FBI has stated that there are active IS-related investigations in all 50 states. To date, 28 states and the District of Columbia have had at least one charge within their borders:



AGE

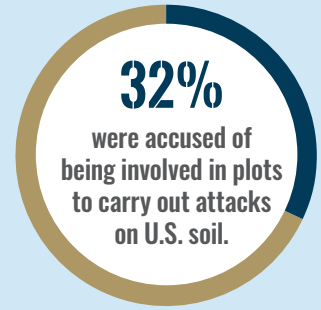
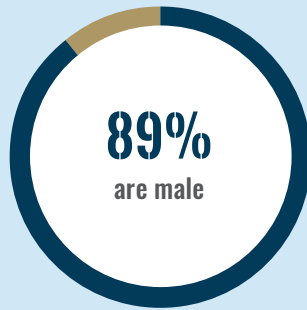
28 average age at charging

● = 1 person

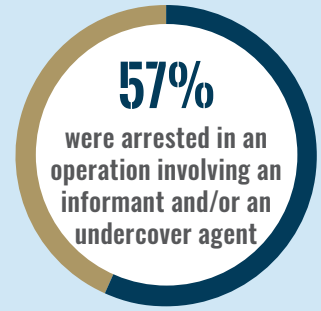
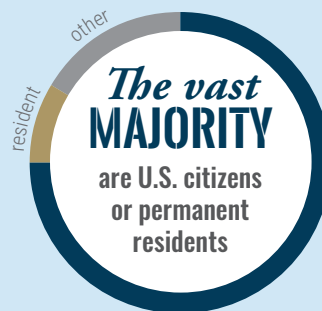


DEMOGRAPHICS & CHARGES

NUMBERS BY STATE



127 individuals have pleaded or were found guilty.



13.5 YEARS average sentence*

Read the **ISIS IN AMERICA** full report: FROM RETWEETS TO RAQQA



* Uses 470 months for life sentences per the U.S. Sentencing Commission practice.

Find more at extremism.gwu.edu or follow @gwupoe on Twitter